



**Industrious
Honeybee**

*Working hard to
update my home
for my family*



**Growing
Hermit Crab**

*On the lookout for a
safe and comfortable
new home*



PARTNERS IN ENERGY
An Xcel Energy Community Collaboration

Which Approach is Best for You?

Instructions: Rotate the red wheel for your response to motivation, then align the window to your preferred upgrade level to reveal your best electrification approach.



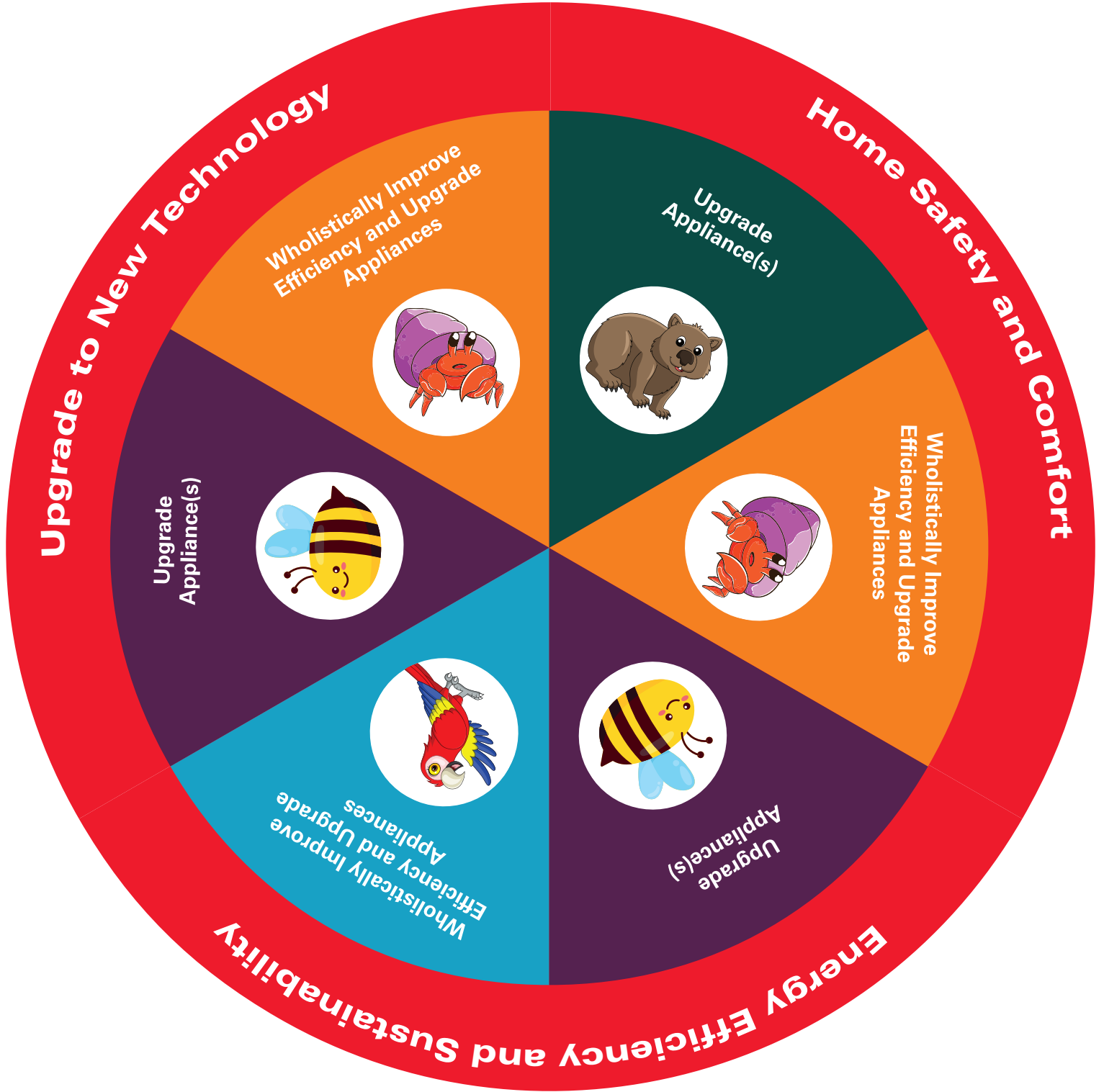
**Adventurous
Parrot**

*Willing to go out on a
limb to try something new*



**Resilient
Wombat**

*Making sure my home is a
safe and comfortable refuge*





Beneficial Electrification is a key sustainability initiative

Beneficial electrification is the replacement of natural gas-burning appliances with efficient all-electric ones. In tandem with this transition, electricity supply is becoming increasingly supported from renewable sources like wind and solar power to reduce reliance on fossil fuels that contribute to climate change.

Making a switch in your home could help make a real difference. Residential fossil fuel use is about 6%¹ of all GHG emissions in the state of Colorado.

Xcel Energy is taking action to reduce greenhouse gas emissions across the entire natural gas value chain — from production, delivery and customer use. Whether our customers choose to heat their homes with electricity or natural gas, we aim to continue to be their trusted energy provider.

Explore the different offers available for your home upgrades and improvements at xcelenergy.com/HomeRebates.



PARTNERS IN ENERGY
An Xcel Energy Community Collaboration



¹Total CO 2020 GHG emissions 128.90MMTCO₂e and Residential fuel use 8.621MMTCO₂e (Colorado Air Pollution Control Division, 2023)

