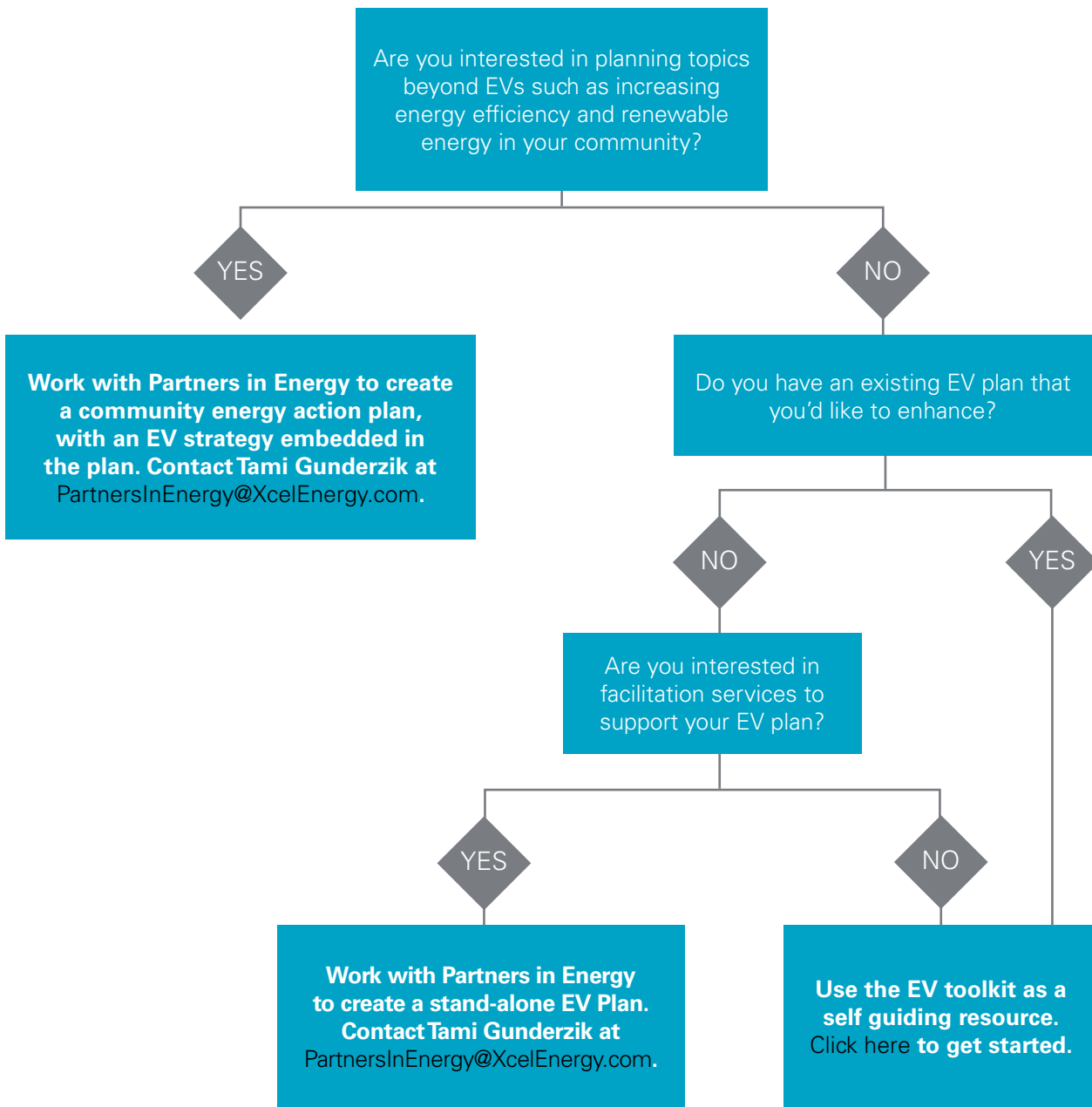


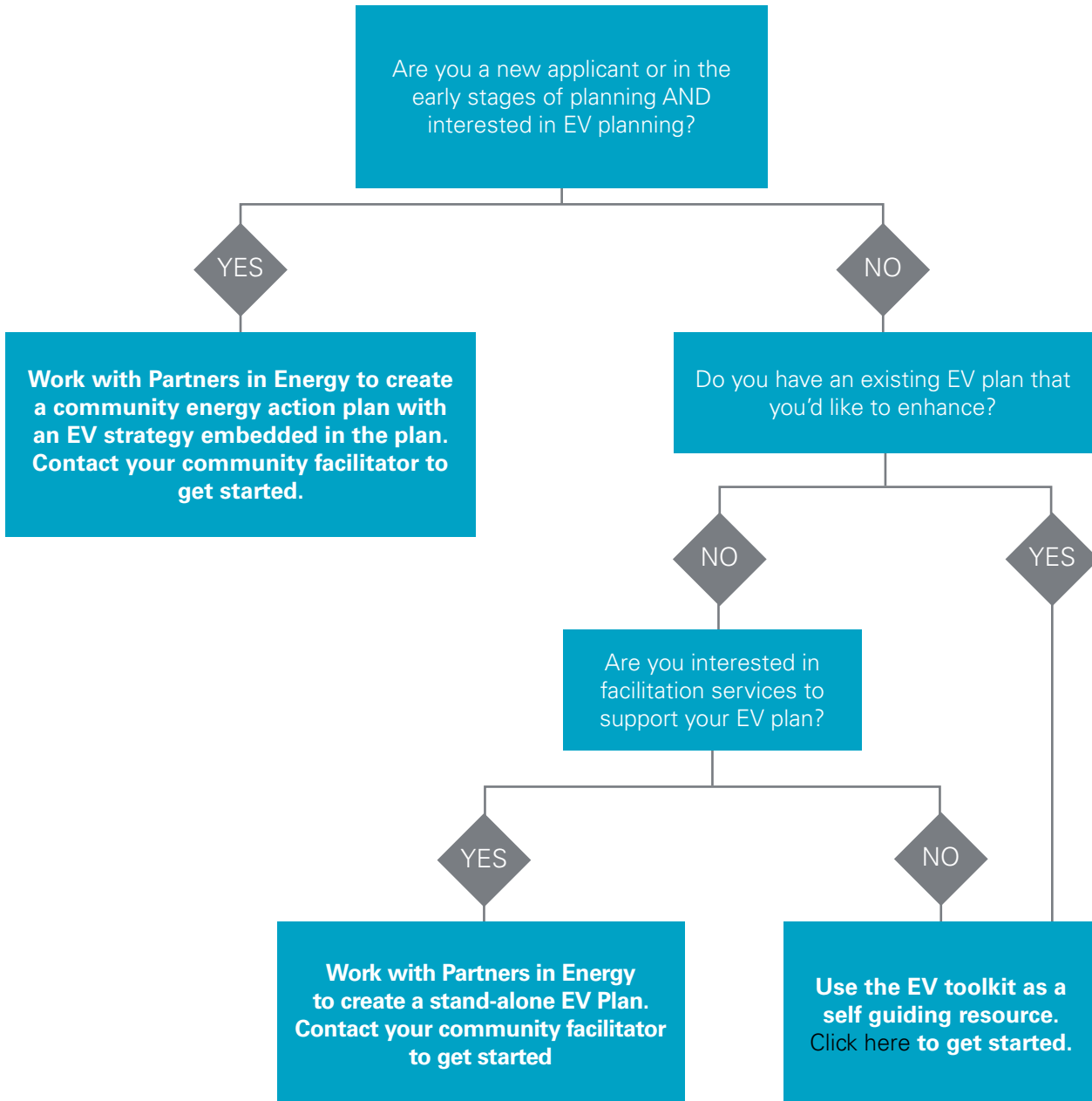
COMMUNITIES NEW TO PARTNERS IN ENERGY

If you're new to Partners in Energy, welcome! We're happy to support your EV planning needs as a stand-alone effort or in conjunction with a broader community energy action plan. The decision tree below provides guiding questions to help inform which approach might be best for your community.



EXISTING PARTNERS IN ENERGY COMMUNITIES

If you're an existing or returning Partners in Energy community, welcome back! We're excited to build on our energy partnership by collaborating on EV planning. The decision tree below provides some guiding questions to help inform which approach might be best for your community.



WORKING WITH XCEL ENERGY

There are key points in electric vehicle (EV) planning where good communication with your utility is an important step to successful strategy planning and implementation. For more information on how Xcel Energy can support your EV transition, please contact:

1. Learn more online:
 - B. Visit ev.xcelenergy.com for information on residential programs and tools residents choose to help in their decision to purchase EVs for personal use.
 - C. Visit [the website](#) for information on fleet electrification programs and incentives.
2. Email: ElectricVehicles@xcelenergy.com
3. Call your Xcel Energy customer service representative:
 - Residential customers: 800-895-4999
 - Small businesses: 800-481-4700
 - Municipalities, institutions, large businesses and other large energy users can contact their account representative. If you don't know who your account manager is, call 800-481-4700 to find out.

Xcel Energy EV Vision

Xcel Energy's EV vision is to **power 1.5 million EVs in its communities by 2030.**

Through new EV customer programs and charging infrastructure, Xcel Energy will expand its clean energy leadership to transportation - developing innovative partnerships with communities, customers and other stakeholders while saving customers money.

- Customers would save nearly \$1 billion on fuel each year by 2030.
- EVs will deliver cleaner air and help cut nearly 5 million tons of carbon emissions annually by 2030.
- Xcel Energy is actively working with partners to increase EV access while developing plans that focus on equity and accessibility, allowing everyone to benefit from EVs.

RESIDENTIAL OUTREACH AND EDUCATION

Xcel Energy has a variety of tools to help educate community members about EVs and residential EV charging that can be used when planning residential outreach and education events. Resources are available at ev.xcelenergy.com and include:

- 1. EV 101:** Residents can learn about key benefits of driving electric, including cost savings, environmental benefits, convenient charging, and the fun factor; this section also includes FAQs.
- 2. EV Catalog:** This interactive tool allows residents to compare EVs by range, price, or a personalized Match Score. Residents can then view EV details including total cost compared to a similar gasoline powered vehicle.
- 3. Incentives:** Residents can discover tax credits, rebates, and other incentives specific to their location.
- 4. Qualified Dealers:** This interactive map shows local auto dealerships that are knowledgeable about EVs.
- 5. Charging:** This section includes an interactive map of nearby public charging stations, information about residential EV charging programs, and information about different charging levels and other charging FAQs.

Your Xcel Energy representative can provide support for your tabling events and other residential outreach efforts. This support may include EV program collateral, tabling kits, and interactive learning opportunities.



CHARGING INFRASTRUCTURE PLANNING

For any charging station larger than level 1 should be installed by a licensed electrician and your Xcel Energy account representative to ensure your existing electrical service can support the additional load. For typical electrical service requirements for each charger type see EV 101. If a service upgrade is required, your account representative can help you understand the additional costs that may be associated with that upgrade and help you navigate the process. Resources available to help expand your EV infrastructure can be found at xcelenergy.com/CommercialEVs and include:

1. **Fleet Service Pilot (MN):** Currently available in Minnesota, the Fleet Service Pilot program offers free installation of make-ready charging infrastructure, charging equipment options, installation services and payment options, and access to Xcel Energy's low-cost EV charging rate.
2. **Public Charging EV Service Pilot (MN):** To help stimulate growth in publicly available EV charging stations, this pilot will offer participants design of charging infrastructure, infrastructure construction, infrastructure maintenance, and technical assistance for public charging stations.
3. **Developers Get Started Guide:** This [Get Started Guide](#) will help you better understand who to contact and when, during EV charging infrastructure planning and installation.
4. **Commercial EV Service Program (WI):** If your business or community is ready to add public charging, Xcel Energy can help you get started. Receive advisory support, no-cost infrastructure development services, EV charging plan choices, and installation and maintenance of your charging equipment.

UTILITY RATE ANALYSIS

It is important to understand what electrical rate is available and most advantageous based on the anticipated vehicle charging patterns. First, you will need to determine if the EV charging station is going to be included in the electricity use of the building where it is installed or if it will be metered separately. This decision will determine what electricity rates are potentially available, which can have significant impact on your EV fuel costs.

1. **EV Critical Peak Pricing (CO):** Peak Critical Pricing uses price signals to encourage customers to reduce electricity load during certain periods. By charging EVs during off-peak periods, customers can save up to 5%-10% on their annual electric bills. Learn more [here](#).
2. **Charging your Electric Vehicle (CO, MN, WI):** Over 80% of EV charging happens at home. Learn more about available charging programs and electric pricing plans [here](#).

FLEET TRANSITION PLANNING

For vehicle fleet operations, finding innovative ways to manage costs, performance, and reliability are priority. Fleet electrification is one way organizations are saving money while also reducing greenhouse emissions. Xcel Energy offers advisory services to guide customers through the fleet electrification process. For more information on applicable programs, incentives, or rates reach out to your account representative or email ElectricVehicles@xcelenergy.com to schedule a meeting with the Xcel Energy EV fleets team. Resources available to help expand EV infrastructure can be found at xcelenergy.com/CommercialEVs and include:

1. **Fleet Electrification Advisory Program (CO, MN):** Xcel Energy's Fleet Electrification Advisory Program begins with an analysis that helps determine the best course of action for fleet electrification. Analytics provider, Savatch Labs, will help fleet operators assess individual vehicles to determine if needs can be met with an EV. Additionally, participants will receive a charging-site suitability and estimates the cost of infrastructure installation. Finally, Xcel Energy helps advise on rate plans and pilot programs to lower costs. For more information on commercial EV support solutions, visit xcelenergy.com/CommercialEVs, email ElectricVehicles@xcelenergy.com, or reach out to your account representative to schedule a meeting with the Xcel Energy EV fleet team.
2. **Fleet Service Pilot (MN):** Currently available in Minnesota, the Fleet Service Pilot program offers free installation of make-ready charging infrastructure, charging equipment options, installation services and payment options, and access to Xcel Energy's low-cost EV charging rate.
3. **Commercial EV Service Program (WI):** If your business or community is ready to add public charging, Xcel Energy can help you get started. Receive advisory support, no-cost infrastructure development services, EV charging plan choices, and installation and maintenance of your charging equipment.

HEAVY DUTY FLEET TRANSITIONS PLANNING

When considering transitioning heavy duty fleets to EVs, it is very important to include your account representative early in the planning process. Charging large vehicles can be a significant electrical load, especially if multiple vehicles are charged at the same location, so it is important to understand the service upgrades that may be required to accommodate these chargers. Opportunities may exist for time-of-day charging rates or controls. Xcel Energy's fleet transition also includes their heavy-duty vehicles, so there may be some lessons learned that can be applicable to your transition. For more information, reach out to your account representative or email the EV team at ElectricVehicles@xcelenergy.com.