



PARTNERS IN ENERGY
An Xcel Energy Community Collaboration

TIME OF USE BOOKLET COLORADO

HOW TO USE THIS BOOKLET

Xcel Energy is committed to partnering with community leaders in our Colorado service territory. The primary audience for this playbook is local government staff and community organizations looking to provide information to Colorado residents and businesses about Xcel Energy's Time of Use rate.

As a community representative, this booklet will equip you with resources to effectively communicate about and respond to questions on Xcel Energy's Time of Use rate and rollout.



RESOURCES IN THIS BOOKLET

This booklet provides customizable templates you can use to inform your community about Xcel Energy's transition to the Time of Use rate. The resources are intended to help you:

- Identify how the Time of Use rate can support your community's energy and resilience goals.
- Raise awareness about the Time of Use rate and how residents and businesses will be impacted.
- Respond to questions.
- Foster consistent messaging and a common understanding to prevent misinformation.

Resources typically fall under one of two types: ready-to-use informational materials or customizable templates for community-specific engagement and communications.

A few specific notes before using these resources:

- Resources available for customization in implementing your advanced grid community engagement strategy are meant to be used in collaboration with Xcel Energy. Contact PartnersinEnergy@xcelenergy.com to request use of a template.
- In communities served by more than one electric utility, be sure to convey that this information only pertains to those customers served by Xcel Energy.

Please see the [Resources section](#) below for a full list of Xcel Energy materials and templates available for customization and co-branding.

Additional Resources from Xcel Energy

- Time of Use Rate Video: [English](#) | [Español](#)
- [Transition to Time of Use Rate Sheet](#)
- [Time of Use Rate Webpage](#)
- [Appliance List](#)
- [Practical Ways to Save Webpage](#)
- [EcoBee Time of Use Optimization](#)
- [Customer Examples](#)
- [Time of Use Solar FAQ](#)
- [MyEnergy Access Tutorial](#)

Table of Contents

| | |
|--|-----------|
| THE BASICS OF TIME OF USE | 6 |
| What is Time of Use pricing? | 6 |
| What is the Time of Use Rate? | 6 |
| When will my community switch to the Time of Use rate? | 6 |
| What's the difference between on-peak, mid-peak, and off-peak hours? | 7 |
| Will customer bills increase or decrease under the Time of Use rate? | 8 |
| What are the customer benefits of the Time of Use rate? | 8 |
| Why is Xcel Energy offering Time of Use pricing? | 9 |
| Can customers opt out of the Time of Use rate? | 9 |
| What resources are available for low-income customers? | 9 |
| How will the Time of Use rate affect businesses? | 10 |
| How does the Time of Use rate work with home solar and Solar*Rewards®? | 10 |
| | |
| COMMUNITY RESOURCES | 11 |
| Community Website Sample Content | 12 |
| Community Website Sample Content (Spanish) | 14 |
| Newsletter Template 1 | 16 |
| Newsletter Template 1 (Spanish) | 17 |
| Newsletter Template 2 | 18 |
| Newsletter Template 2 (Spanish) | 19 |
| Social Media Content | 20 |
| Co-Branded Flyer | 21 |
| Co-Branded Flyer (Spanish) | 23 |



THE BASICS OF TIME OF USE

[BACK TO TABLE OF CONTENTS](#)

THE BASICS OF TIME OF USE

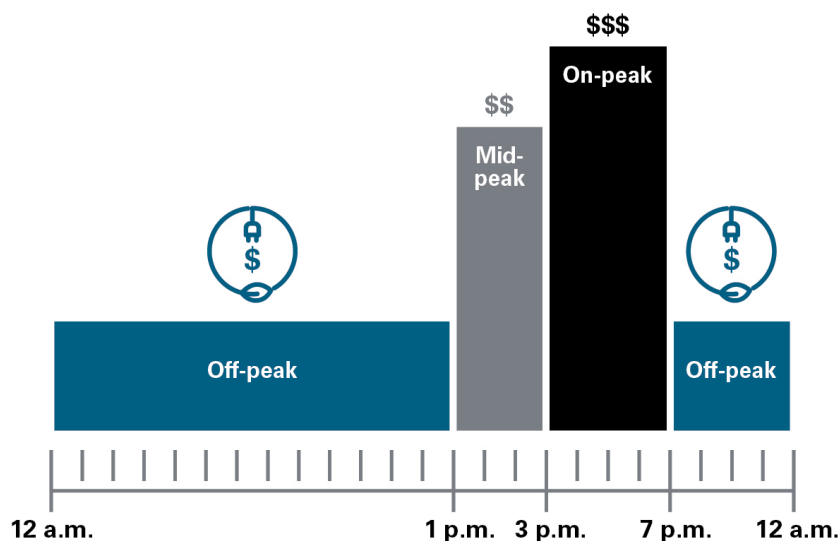
WHAT IS TIME OF USE PRICING?

Starting in 2022, all Colorado customers will begin to transition to the Time of Use rate after they receive a smart or non-communicating meter.

With the Time of Use rate, prices depend on the amount (in kilowatt hours (kWh)) of energy used during different times of the day. Earlier and later in the day, when there is lower energy demand and more renewable energy generation, prices are lower. In the middle of the day, when there is higher energy demand and it is more expensive to generate electricity, prices are higher. This means that when customers use energy, is just as important as how much energy customers use.

WHAT IS THE TIME OF USE RATE?

The Time of Use rate changes depending on the time of day and the season. For current pricing, please visit xcelenergy.com/TOU.



Summer: June 1 – September 30 **Winter:** October 1 – May 30

Weekends and holidays billed at the off-peak rate.

WHEN WILL MY COMMUNITY SWITCH TO THE TIME OF USE RATE?

All Colorado residential customers will transition to the Time of Use rate over a three-year period that started in early 2022. Customers in Colorado will be automatically enrolled in the Time of Use rate after their smart meter or non-communicating opt-out meter is installed. To see an installation map of smart meters across Colorado, please visit [this page](#) for 2022 updates and [this page](#) for the 2023 schedule.

Time of Use enrollment will occur in waves — either in April or October, depending on the installation date of the customer's new meter. Customers will be notified 30 days before their rate changes. They will also receive communications about the rate change 15 days prior to being enrolled and on the day of their transition.

WHAT'S THE DIFFERENCE BETWEEN ON-PEAK, MID-PEAK, AND OFF-PEAK HOURS?

In Colorado, there are three time periods related to the Time of Use rate.

Off-peak hours, when energy costs are the lowest, make up over 80% of the time during the year. Off-peak hours provide the most cost savings opportunity. During on-peak and mid-peak hours, energy costs are higher to reflect the true cost of producing electricity during high demand. Peak demand is the highest amount of energy use that occurs during a specific time period. Xcel Energy ensures enough electricity generation capacity to meet peak demand, while maintaining flexibility to scale down generation during off-peak hours.

The Time of Use rate changes throughout the day to reflect changing costs during these different periods:

| | Sun. | Mon. | Tues. | Wed. | Thurs. | Fri. | Sat. |
|-----------------|------|------|-------|------|--------|------|------|
| 12:00 am | | | | | | | |
| 1:00 pm | | | | | | | |
| 3:00 pm | | | | | | | |
| 7:00 pm | | | | | | | |

| | | | | | |
|--|---|---|--|---|--|
|  | On-Peak Hours 4 hours a weekday between 3 p.m. and 7 p.m., excluding holidays* |  | Mid-Peak Hours 2 hours a weekday between 1 p.m. and 3 p.m., excluding holidays* |  | Off-Peak Hours 18 hours a weekday between 7 p.m. and 1 p.m., all day on weekends and holidays* |
|--|---|---|--|---|--|

**Holidays are New Year's Day, Martin Luther King Jr. Day, Presidents' Day, Memorial Day, Independence Day, Labor Day, Columbus Day, Veterans Day, Thanksgiving Day, and Christmas Day. Holidays are considered off-peak for the full 24-hour period.*

WILL CUSTOMER BILLS INCREASE OR DECREASE UNDER THE TIME OF USE RATE?

Bill impact will be determined based on when customers use energy. The rate is designed to be revenue neutral, which means the average customer will not experience a large bill increase or decrease. However, if customers take measures to shift major appliance use to off- and mid-peak hours, they could see a decrease in their bill. If customers frequently use appliances during peak times, they may see an increase in their bill. To further understand these impacts, explore real life scenarios that take into account home size, appliances, and lifestyle here: <https://co.my.xcelenergy.com/s/billing-payment/residential-rates/customer-examples>.

WHAT ARE THE CUSTOMER BENEFITS OF THE TIME OF USE RATE?

The Time of Use rate gives customers more flexibility and ways to save beyond energy efficiency alone. They also can help advance your community's energy and resilience goals. Specifically, the Time of Use rate:

- **Provides customers more control over bills.** The Time of Use rate empowers customers to monitor and manage their energy use. Off-peak hours, which have an average 55% lower cost than on-peak hours, occur during 18 hours of weekdays plus 24 hours of weekends and holidays — over 80% of the entire year. Customers who shift electricity use to non-peak hours could reduce their energy bills without decreasing their energy usage.
- **Encourages renewable energy sources.** Renewable sources, like wind and solar, are more readily available during off-peak times. Shifting use to these time periods encourages more use of renewable sources.
- **Increases customer awareness of energy usage.** Within the My Account portal, customers can access energy use information by 15-minute increments. Within the tool they can also see personalized tips to save energy and money. These features will give customers more insight into their energy use and help them make adjustments to avoid unexpectedly high bills. To learn more about accessing these resources, reference [this tutorial](#).
- **Creates opportunities to save on bills.** The Time of Use rate creates opportunities to save on energy bills, beyond energy conservation. Shifting appliance use to off-peak hours can help customers save without having to lower their energy usage.

WHY IS XCEL ENERGY OFFERING TIME OF USE PRICING?

Xcel Energy always strives to keep bills low, provide reliable and renewable energy at an affordable cost, and offer options and information customers want. Time-varied plans, such as the Time of Use rate, reduce the total amount of energy that Xcel Energy needs to provide during peak times when everyone is using energy. If Xcel Energy can reduce electricity demand during peak times, when it is also most expensive, it can avoid building new power plants and keep the overall electricity costs lower for customers.

In addition to creating flexible options to keep costs low, the Time of Use rate promotes renewable energy sources. By shifting the times that customers use electricity to when there is more wind (at night) or more sun (in the mornings), Xcel Energy can rely more on these renewable energy sources that advance progress toward a cleaner, greener future and are also a more affordable source of energy .

CAN CUSTOMERS OPT OUT OF THE TIME OF USE RATE?

Yes, any customer can opt out of the Time of Use rate with a 30-day notice to Xcel Energy. Customers who opt out of the Time of Use rate will be placed on the Residential Opt-Out rate. This rate changes seasonally, regardless of what time the customer uses energy or how much energy they use. In order to formally opt out, customers should call 800-895-4999.

Please note that customers can receive a smart meter and still choose to be on the Opt-Out rate. Customers who choose a non-communicating meter can opt-in to the Time of Use rate and will receive monthly data rather than more granular use data that smart meters are able to provide. For more information and resources about smart meters, please see the full Advanced Grid Playbook available at xcelenergycommunities.com/AdvancedGrid.

Please refer to the [Time of Use website](#) "rate comparison" section for current pricing.

WHAT RESOURCES ARE AVAILABLE FOR LOW-INCOME CUSTOMERS?

Xcel Energy always strives to keep bills low, provide reliable and renewable energy at an affordable cost, and offer options and information customers want. The Time of Use rate provides customers more control over their bills, allowing them to shift use to off- and mid-peak times and to also potentially see lower bills.

Low-income customers can also take advantage of a variety of assistance programs available to help them manage costs. Pay Arrangements allow customers to spread balances over a longer period of time to make things easier on their budgets. Xcel Energy also offers energy and cost savings rebates to help customers install energy saving equipment to lower overall energy use and cost. Information about Pay Arrangements and other programs for low-income customers can be found at:

<https://co.my.xcelenergy.com/s/billing-payment/energy-assistance>.

HOW WILL THE TIME OF USE RATE AFFECT BUSINESSES?

Commercial customers will have a different Time of Use rate and rollout plan than residential customers.

For questions on how the Time of Use rate will impact commercial customers, encourage businesses to contact their account manager or the Business Solutions Center at bsc@xcelenergy.com or by calling 800-481-4700.

HOW DOES THE TIME OF USE RATE WORK WITH HOME SOLAR AND SOLAR*REWARDS®?

Solar credits are worth the price of energy at a given time, so under Time of Use, energy produced during “on-peak” and “mid-peak” pricing periods has the opportunity to receive higher credits depending on your election for payout. When customers shift energy use away from peak hours, they will see a reduction in the cost of delivered energy and may actually gain more credits for the excess energy they produce. Net meter installations for solar customers began in Q1 2023.

CUSTOMERS DON'T HAVE TO WAIT.

They may opt in to the Time of Use rate any time after receiving their smart meter before the automatic roll-on window by calling Customer Care at 800-895-4999.

Customers will be rolled on to the Time of Use rate within 30 days of their call. Otherwise, they will automatically roll on to the rate in the coming months, according to the rate transition calendar.



A high-angle, close-up photograph of a person's hands typing on a silver laptop keyboard. The person is wearing a light-colored, long-sleeved button-down shirt. The laptop is open on a dark wood-grain desk. The lighting is soft, highlighting the texture of the keyboard and the person's skin. The overall composition is clean and professional.

COMMUNITY RESOURCES

Community Resources

All templates can be translated to Spanish. Reach out to PartnersinEnergy@xcelenergy.com.

COMMUNITY WEBSITE SAMPLE CONTENT

Technology is advancing in every area of our lives. Xcel Energy is modernizing their electric distribution grid and grid management operations. Over the next few months, Xcel Energy will install smart meters across [community name].

Following installation of smart meters, customers will automatically be enrolled in Time of Use. With the Time of Use rate, prices depend on the amount (in kilowatt hours (kWh)) of energy used during different times of the day. Earlier and later in the day, when there is lower energy demand and more renewable energy generation, prices are lower. In the middle of the day, when it is more expensive to generate electricity, prices are higher.

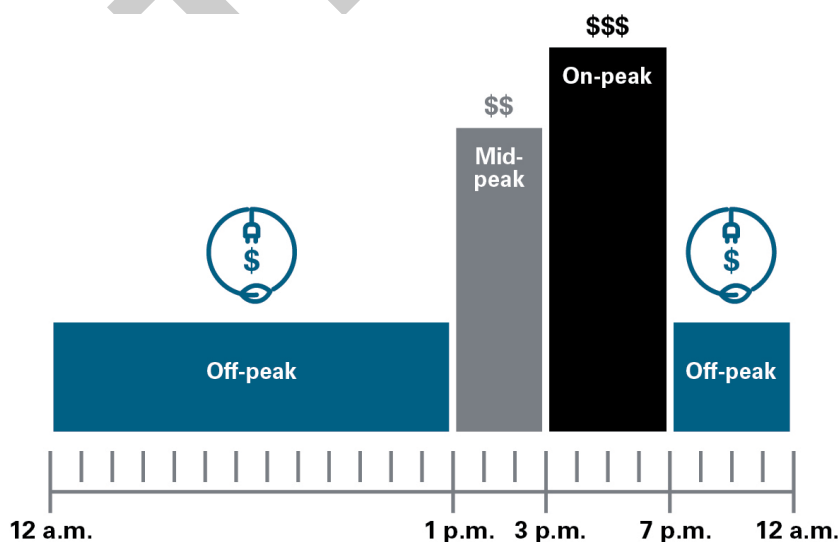
Understanding these differences can help you save on your energy bill.

How it Works

The Time of Use rate allows you to pay based on both when and how much energy you use. The more you shift usage to lower-priced periods, the more you can save. In Colorado, there are three time periods related to Time of Use pricing. Off-peak hours, when energy costs are the lowest, make up over 80% of the time and have an average cost of 55% lower than on-peak hours and 40% lower than mid-peak hours. During on- and mid-peak hours, energy costs are higher (to reflect higher production costs). This means that **when** you use energy, is just as important as **how much** energy you use.

By shifting your energy usage to off-peak times you can:

- Save money on your electricity bill
- Help use a greater percentage of renewable energy during off-peak hours when wind and solar are more readily available
- Help avoid the need to build new power plants in the future



Summer: June 1 – September 30 **Winter:** October 1 – May 30

Weekends and holidays billed at the off-peak rate.

Tips to Save

Follow some of these tips to start saving today:

- Use high energy appliances like dishwashers, air conditioners, clothes washers, and clothes dryers during off-peak hours (the 18 hours weekdays between 7 p.m. and 1 p.m. and all day on weekends and holidays!).
- Install a programmable smart thermostat to automatically control your air conditioner and furnace to run during off-peak hours. Find additional savings with a rebate from the [Xcel Energy Store](#).
- To better understand when and how you use energy, check out your My Account to see your energy usage in 15-minute increments and receive customized personal savings tips. To sign up or see your account, visit xcelenergy.com/MyAccount.
- Charge your electric vehicle overnight to avoid on-peak prices during the day.
- Turn off lights, equipment, computers, and other smaller electronic devices when not in use.
- Use smart power strips to help turn off all connected appliances with one button.
- Check out Xcel Energy's [rebate opportunities](#) for savings on energy efficient equipment.

Resources

We have compiled the resources below for the [community name] community.

- Video explaining how the Time of Use rate works: [English](#) | [Español](#)
- [Time of Use FAQs](#)
- [Times of Use Solar FAQs](#)
- [Transition to Time of Use Rate Sheet](#)
- [Appliance Infographic – Shift Your Energy Use](#)
- [MyEnergy Access Tutorial](#)

To learn more about Xcel Energy's Time of Use Rate, visit xcelenergy.com/TOU.

COMMUNITY WEBSITE SAMPLE CONTENT (SPANISH)

La tecnología está avanzando en cada aspecto de nuestras vidas. Xcel Energy está modernizando su red de distribución eléctrica y la gestión de las redes. Durante los próximos meses, Xcel Energy instalara medidores inteligentes en todo [Community name].

Después de la instalación de los medidores inteligentes, los clientes estarán automáticamente inscritos en Time of Use. El costo de Time of Use, depende de la cantidad (en kilovatio/hora(kWh)) de energía usado durante diferentes tiempos del día. Temprano y más tarde en el día, el uso de la energía esta de bajo consumo y hay más generación de energías renovables, entonces el costo es bajo. A mediodía, es más costoso generar electricidad y el costo es más alto.

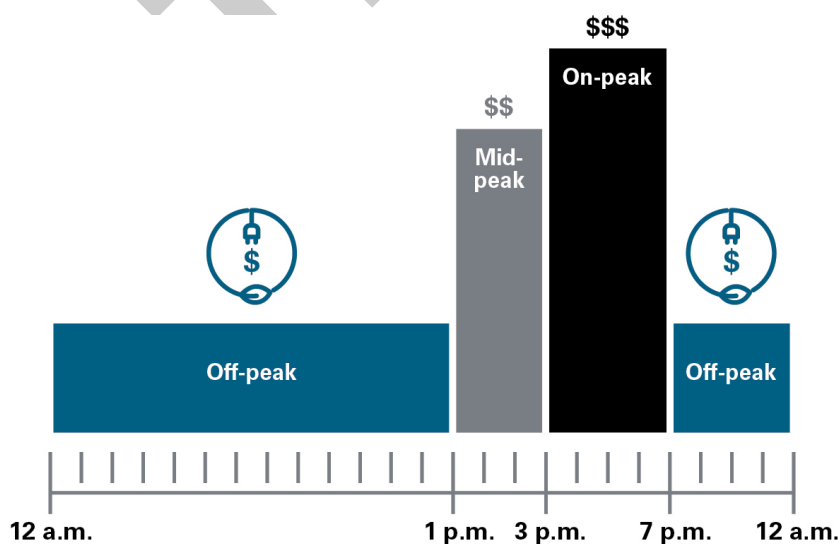
Entendiendo las diferencias puede ayudarle a ahorrar en su factura de energía.

Como funciona

La tarifa de Time of Use le permite pagar basado a cuándo y cuanto es su uso de energía. Cuanto más cambie su uso a periodos de bajo costo, más podrá ahorrar. En Colorado, existen tres periodos de tiempo relacionado con Time of Use Pricing (Tarifa de Tiempo de Uso). En horas de baja actividad, cuando el costo de energía está bajo, ocupan más del 80% del tiempo y tienen un costo medio de 55% más bajo que en horas de mayor uso y 40% mas bajo que en horas de medio uso. Durante las horas de mayor y medio uso, el costo de energía es más alto (para reflejar los mayores costes de producción). Esto significa que **cuando** usa energía, es igual de importante que **la cantidad** de energía que usa

Al cambiar el uso de la tecnología a tiempos de poco uso usted puede:

- Ahorrar dinero en su factura de energía
- Ayuda a usar gran porcentaje de energía renovable en tiempos de poco uso cuando energía eólica y solar es fácilmente disponible.
- Ayuda evitar la necesidad de construir centrales eléctricas en el futuro.



Summer: June 1 – September 30 **Winter:** October 1 – May 30

Weekends and holidays billed at the off-peak rate.

Consejos para Ahorrar

Siga algunos de estos consejos para empezar a ahorrar hoy mismo

- Use electrodomésticos de alta energía como lavavajillas, acondicionadores de aire, lavadoras y secadoras de ropa fuera de las horas pico (las 18 horas entre semana entre las 7 p. m. y la 1 p. m. y todo el día los fines de semana y feriados).
- Instale un termostato inteligente programable para controlar automáticamente su aire acondicionado y horno para que funcionen durante las horas de menor actividad. Encuentre ahorros adicionales con un reembolso de [Xcel Energy Store](#).
- Para comprender mejor cuándo y cómo usa la energía, consulte My Account para ver su uso de energía en incrementos de 15 minutos y recibir consejos de ahorro personalizados. Para registrarse o ver su cuenta visite xcelenergy.com/MyAccount.
- Cargue su vehículo eléctrico durante la noche para evitar las tarifas altas durante el día. Apague las luces, equipos, computadoras y otros dispositivos electrónicos pequeños cuando no estén en uso.
- Utiliza tiras de poder inteligente para ayudar a apagar.
- Vea Xcel Energy's rebate opportunities para ahorrar con equipo de bajo consumo.

Mire este video explicando cómo funciona la tarifa de [Time of Use en Español](#). Para aprender más sobre Xcel Energy's Time of Use Rate visite xcelenergy.com/TOU.

Contact PartnersInEnergy@xcelenergy.com to request use of a template.

NEWSLETTER TEMPLATE 1

Time of Use: A new way to track energy use for the [community name] community.

Weather isn't the only thing that changes with the seasons – your energy use does, too! When and how you keep cool this summer can impact the environment. During times when more people are using energy, like late afternoon and early evening, it costs more to produce energy; and Xcel Energy may need to use more fossil fuels to meet demand. If we shift our energy use to different times of the day, like later in the evening and earlier in the day, Xcel Energy can use more lower-cost, carbon-free energy like wind and solar. Plus, if you're on Xcel Energy's new Time of Use rate, you could also save money on your Xcel Energy bill when you shift your energy use.

So how can you stay cool and green this summer? Try these tips to shift your energy use to different times of the day and see what works for you to keep doing long-term!



NEWSLETTER TEMPLATE 1 SPANISH

Time of Use: Una nueva manera de monitorear el uso de energía en la comunidad de [community name].

El tiempo no es lo único que cambia con las temporadas – ¡Su uso de energía también cambia! Cuando y como se mantiene fresco este verano puede afectar al medio ambiente. Durante las horas en que más gente utiliza la energía, como al final de la tarde y al principio de la noche, cuesta más producir energía; y, Xcel Energy puede necesitar utilizar más combustibles fósiles para satisfacer la demanda. Si trasladamos nuestro uso de la energía a diferentes momentos del día, como por ejemplo a última hora de la tarde y a primera hora del día, Xcel Energy puede utilizar más energía libre de carbono y de bajo costo, como la eólica y la solar. Además, si tiene la nueva tarifa Time of Use de Xcel Energy, también ahorrara dinero en su factura de Xcel Energy cuando cambie su consumo de energía.

¿Entonces como es que se puede mantenerse fresco y verde este verano? Use estos consejos para cambiar su uso de energía a diferentes horas del día.



Contact PartnersinEnergy@xcelenergy.com to request a Spanish version of the graphic.

NEWSLETTER TEMPLATE 2

The Time of Use rate is coming to [community name]!

With the Time of Use rate, prices depend on the amount (in kilowatt hours (kWh)) of energy used during different times of the day. Earlier and later in the day, when there is lower energy demand and more renewable energy generation, prices are lower. In the middle of the day, when it is more expensive to generate electricity, prices are higher. This means that when customers use energy, is just as important as how much energy customers use.

Time of Use enrollment will occur in waves - either in April or October, depending on when you received your new meter. Please note that customers can receive a smart meter, and still opt out of the Time of Use rate. Xcel Energy will notify customers 30 days before their rate changes. You'll also receive communication about the rate change 15 days prior to being enrolled and on the day of the rate transition.

What [community name] residents can expect from Time of Use

Time of Use pricing allows you more control over your energy bill by using a different rate for energy used during different times of the day. If you shift your electricity use to non-peak hours, you may see a reduction in your energy costs. More information on Time of Use pricing and ways to reduce your energy costs can be found at xcelenergy.com/TOU.

What to do if you'd like to opt out of Time of Use

Any customer can opt out of the Time of Use rate with a 30-day notice to Xcel Energy. Customers who opt out of the Time of Use rate will be placed on the Residential Opt-Out rate. This rate changes seasonally, regardless of what time the customer uses energy or how much energy they use. In order to formally opt out, customers should call 800-895-4999.

Xcel Energy is working to develop new programs and services to help you track and manage your energy use and costs.

As smart meters are installed and software goes live, customers will be able to see their near real-time energy use and costs through new web and mobile dashboards. The online platforms and billing statements will include more detailed information about the individual customer's energy use by time of day, as well as personalized tips on how to save on energy costs.

For more information that [community name] has compiled visit, [URL here].

NEWSLETTER TEMPLATE 2 SPANISH

La tarifa de Time of Use está llegando a [community name]!

El costo de Time of Use, depende de la cantidad (en kilovatio/hora(kWh)) de energía usado durante diferentes tiempos del día. Temprano y más tarde en el día, el uso de la energía esta de bajo consumo y hay más generación de energías renovables, entonces el costo es bajo. A mediodía, es más costoso generar electricidad y el costo es más alto. Esto significa que cuando usa energía, es igual de importante que la cantidad de energía que usa.

Las inscripciones de Time of Use se producirán en olas: en abril o en octubre, dependiendo de cuándo haya recibido su nuevo medidor. Tenga en cuenta que los clientes pueden recibir un contador inteligente y aun optar de la tarifa de Time of Use. Xcel Energy notificará a los clientes 30 días antes del cambio de tarifa. También recibirán una comunicación sobre el cambio de tarifa 15 días antes de su inscripción.

Lo que los miembros de [community name] pueden esperar de Time of Use

La tarifa de Time of Use le permite mas control de su factura de energía al ofrecer diferentes tarifas según la hora. Cambiando su uso de electricidad a horas de poco-uso podría reducir su factura de energía. Mas información sobre la tarifa de Time of Use y como usted puede reducir su costo de energía se encuentra en xcelenergy.com/TOU.

Qué hacer si desea optar por salir de Time of Use

Los clientes pueden renunciar a la tarifa Time of Use notificando a Xcel Energy con 30 días de anticipación. Los clientes que decidan excluirse de Time of Use entraran a la tarifa optar por salir-residencial. Esta tarifa cambia por temporadas, independiente de la hora a la que el cliente utilice la energía o de la cantidad de energía que consuma. Para renunciar formalmente, los clientes deben llamar al 800-895-4999

Xcel Energy está trabajando para desarrollar nuevos programas y servicios que le ayuden a controlar y administrar su consumo de energía y los costos.

A partir de la instalación de los contadores inteligentes y la activación del software, los clientes podrán ver su consumo de energía y costos casi en tiempo real a través de nuevos tableros web y móviles. Las plataformas en línea y los estados de cuenta incluirán información más detallada sobre el uso de energía de cada cliente por hora del día, así como consejos personalizados sobre cómo ahorrar en los costos de energía.

Para obtener más información que [community name] ha recopilado, visite [URL here].

SOCIAL MEDIA CONTENT

Contact PartnersinEnergy@xcelenergy.com to request Spanish translations.

Contact PartnersinEnergy@xcelenergy.com to request use of a template.

| Text | Image Card |
|---|---|
| <p>Want to learn more about Xcel Energy’s new Time of Use rate? Xcel Energy has all the information you need to know at xcelenergy.com/TOU.</p> | <p>Learn more about Xcel Energy’s Time of Use Rate! xcelenergy.com/TOU</p> <p>Xcel Energy PARTNERS IN ENERGY An Xcel Energy Community Collaboration</p> <p>Community Logo Placeholder</p> |
| <p>Don’t let high energy costs dampen your summer! Visit xcelenergy.com/TOU to learn practical ways to save with Xcel Energy’s new Time of Use rate.</p> | <p>Practical ways to save on Time of Use rate</p> <p>Xcel Energy PARTNERS IN ENERGY An Xcel Energy Community Collaboration</p> <p>Community Logo Placeholder</p> |
| <p>The Time of Use rate gives you more insight into how you use energy! To better understand when and how you use energy visit, xcelenergy.com/MyAccount.</p> <p>After logging into your account, click the “My Energy” link. With this tool, you’ll be able to find personalized tips to save energy and money</p> | <p>Use your MyAccount Portal to understand when and how you use Energy.</p> |
| <p>Xcel Energy’s new Time of Use rate changes depending on the time of day and the season. Learn about this new rate at xcelenergy.com/TOU and be sure to explore their practical tips to save on energy costs.</p> | <p>TAKE ACTION TO MANAGE YOUR ENERGY COSTS</p> <p>With Xcel Energy’s new Time of Use rate when you use energy, is just as important as how much you use. xcelenergy.com/TOU</p> <p>Xcel Energy PARTNERS IN ENERGY An Xcel Energy Community Collaboration</p> <p>Community Logo Placeholder</p> |

CO-BRANDED FLYER

Be a Part of the Bold Movement to Clean Energy with the Time of Use Rate.

Reaching our community goal of [community goal/vision stated here] means changing how we think about electricity.

Learn How to Save With the New Time of Use Rate

The cost to produce energy changes throughout the day. With the Time of Use rate, you'll pay less for the electricity you use earlier in the day, later in the evening, overnight, and on the weekends - when renewable energy is more abundant and the cost to produce it is less expensive. Electricity prices between 1 p.m. and 7 p.m. on non-holiday weekdays will be higher to reflect the real cost to produce energy during these peak times.

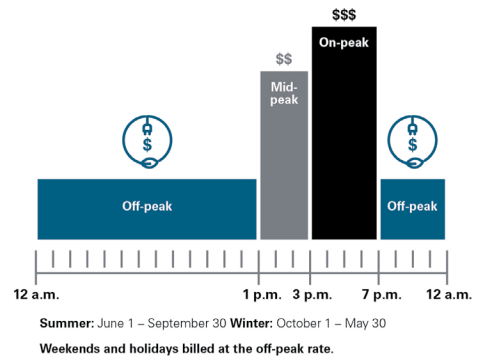
Shifting appliance usage to off-peak times will save you money while increasing the percentage of energy acquired from renewable energy sources!

How it Works

The Time of Use rate allows you to pay based on both when and how much energy you use. The more you shift usage to off-peak hours the more you can save. Off-peak hours occur during 18 hours of the day and have a average 55% lower cost than on-peak hours and an average of 40% lower cost than in mid-peak hours. By shifting your energy use to off-peak hours you can:



- Save money on your electricity bill
- Help use a greater percentage of renewable energy
- Help avoid the need to build new power plants in the future



New Tools, New Insights Into Your Energy Use

To better understand when and how you use energy, check out your My Account. Click the "My Energy" link to see your energy usage in 15-minute increments. With this tool, you'll be able to find personalized tips to save energy and money. If you aren't already enrolled, sign up at xcelenergy.com/MyAccount.

Want more info on the Time of Use rate? Check out xcelenergy.com/TOU. You may also call 800-895-4999.

Community Logo Placeholder



PARTNERS IN ENERGY
An Xcel Energy Community Collaboration

Contact PartnersinEnergy@xcelenergy.com to request use of a template.

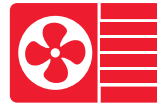
Curious what it costs to run your appliances with the Time of Use rate?

Here's what it costs to run common appliances and equipment:



Central AC Unit (24 hours)

- Peak: \$17.04
- Mid: \$11.76
- Off: \$2.40



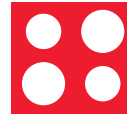
Window AC Unit (24 hours)

- Peak: \$5.52
- Mid: \$3.84
- Off: \$2.16



Dishwasher (2 hours)

- Peak: \$0.22
- Mid: \$0.10
- Off: \$0.08



Electric Range (2 hours)

- Peak: \$0.62
- Mid: \$0.44
- Off: \$0.24

*The figure above are estimates only, actual pricing may vary based on appliance model, efficiency and age plus climate in the region.

Tips to Save

With Time of Use pricing, understanding when and how you use energy can help you save! Check out some of these tips to see what works for you:

- Use your high energy appliances like dishwashers, air conditioners, clothes washers, and clothes dryers during off-peak hours (18 hours during weekdays between 7 p.m. and 1 p.m. and all day on weekends and holidays!).
- Run your dishwasher or clothes washers before 1 p.m. or after 7 p.m. when energy prices are at their lowest.
- Install a programmable smart thermostat to automatically control your air conditioner and furnace to run during off-peak hours. Find additional savings when you receive a rebate at the [Xcel Energy Store](#).
- Check out Xcel Energy's [rebate opportunities](#) for savings on energy efficient equipment.
- To better understand when and how you use energy, check out My Account to see your energy usage in 15-minute increments and receive customized personal savings tips. To sign up or see your account, visit xcelenergy.com/MyAccount.
- Charge your electric vehicle overnight to avoid on-peak prices during the day.
- Turn off your lights, equipment, computers, and other smaller electronic devices when not in use.
- Use smart power strips to help turn off all connected appliances with one button.

List of Xcel Energy existing resources

- Time of Use Rate Video: [English](#) | [Español](#)
- [Transition to Time of Use Rate Sheet](#)
- [Time of Use Rate Webpage](#)
- [Appliance List](#)
- [Practical Ways to Save Webpage](#)
- [EcoBee Time of Use Optimization](#)
- [Customer Examples](#)
- [Time of Use Solar FAQ](#)

Community Logo
Placeholder



PARTNERS IN ENERGY
An Xcel Energy Community Collaboration

CO-BRANDED FLYER SPANISH

Forme parte del Valiente Movimiento hacia la Energía Limpia con la Tarifa Time of Use.

Alcanzar nuestro objetivo comunitario de [community goal/ vision stated here] significa cambiar nuestra forma de pensar sobre la electricidad.

Aprenda A Ahorrar Con La Nueva Tarifa Time of Use

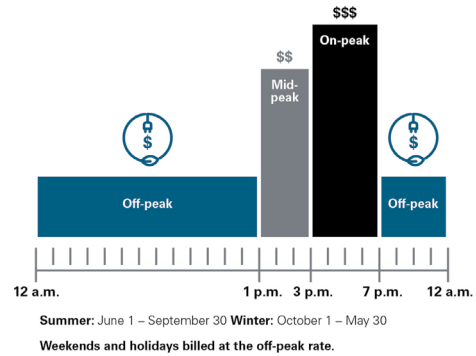
El costo de producir energía cambia a lo largo del día. Con la tarifa Time of Use, pagará menos por la electricidad que consuma a principios del día, a última hora de la tarde, durante la noche y los fines de semana - cuando la energía renovable es más abundante y el costo de producirla es menos caro. Los precios de la electricidad entre las 1PM y las 7PM entre semana serán más altos para reflejar el costo real de producir energía durante horas de mayor consumo.

¡Cambiar el uso de los electrodomésticos a las horas de menor consumo le ahorrará dinero y aumentará el porcentaje de energía adquirida de fuentes renovables!

Como funciona

La tarifa de Time of Use le permite pagar basado a cuándo y cuánto es su uso de energía. Cuanto más cambie su uso a periodos de bajo costo, más podrá ahorrar. Las horas de menor consumo se dan 18 horas del día y tienen un costo medio de 55% más bajo que en horas de mayor uso y 40% más bajo que en horas de medio uso. Si cambia el uso de energía a las horas de bajo consumo, puede:

- Ahorrar dinero en su factura de energía
- Ayuda a usar gran porcentaje de energía renovable en tiempos de poco uso cuando energía eólica y solar es fácilmente disponible.
- Ayuda evitar la necesidad de construir centrales eléctricas en el futuro.



Nuevas herramientas, Nuevos Conocimientos Sobre Su Uso de Energía

Para comprender mejor cuándo y cómo utiliza su energía, consulte " My Account " (Mi cuenta). Haga clic en el botón " My Energy " para ver su consumo de energía en incrementos de 15 minutos. Con esta herramienta, podrá encontrar consejos personalizados para ahorrar energía y dinero y tendrá la opción de recibir alertas de facturas más altas que le avisarán cuando su factura sea más de un 30% más alta que la del mismo periodo de facturación del año anterior. Si aún no estás inscrito, inscríbete en xcelenergy.com/MyAccount.

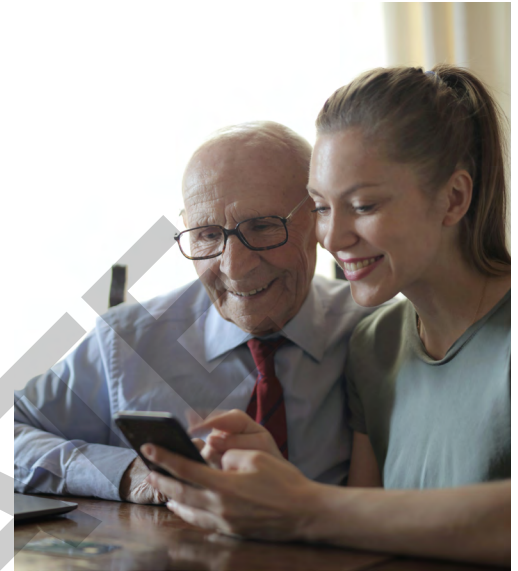
¿Quieres más información sobre la tarifa Time of Use? Consulte xcelenergy.com/TOU. También puede llamar al 800-895-4999.

Community Logo
Placeholder

 **Xcel Energy**[®]

PARTNERS IN ENERGY
An Xcel Energy Community Collaboration

Contact PartnersinEnergy@xcelenergy.com to request use of a template.



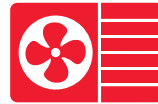
¿Tiene curiosidad por saber lo que cuesta el funcionamiento de sus aparatos con Time of Use?

Esto es lo que cuesta utilizar los electrodomésticos y equipos más comunes:



Hacer funcionar un aire acondicionado central durante 24 horas costaría:

- Alto: \$17.04
- Medio: \$11.76
- Bajo: \$2.40



Hacer funcionar un aire acondicionado de ventana durante 24 horas costaría

- Alto: \$5.52
- Medio: \$3.84
- Bajo: \$2.16



Hacer funcionar un lavavajillas durante 2 horas costaría:

- Alto: \$0.22
- Medio: \$0.10
- Bajo: \$0.08



Hacer funcionar una estufa eléctrica durante 2 horas costaría:

- Alto: \$0.62
- Medio: \$0.44
- Bajo: \$0.24

*Las cifras anteriores son solo estimaciones, los precios reales pueden variar según el modelo del electrodoméstico, la eficiencia y la antigüedad, además del clima de la región.

Consejos para Ahorrar

¡Con la tarifa Time of Use, entender cuándo y cómo se utiliza la energía puede ayudarle a ahorrar! Siga algunos de estos consejos para empezar a ahorrar hoy mismo:

- Use electrodomésticos de alta energía como lavavajillas, acondicionadores de aire, lavadoras y secadoras de ropa fuera de las horas pico (las 18 horas entre semana entre las 7 p. m. y la 1 p. m. y todo el día los fines de semana y feriados).
- Utilice el lavavajillas o la lavadora antes de la 1PM o después de las 7PM cuando los precios de energía son más bajos.
- Instale un termostato inteligente programable para controlar automáticamente su aire acondicionado y horno para que funcionen durante las horas de menor actividad. Encuentre ahorros adicionales con un reembolso de [Xcel Energy Store](#).
- Consulte las [oportunidades de reembolso](#) de Xcel Energy para ahorrar en equipos energéticamente eficientes.
- Para comprender mejor cuándo y cómo usa la energía, consulte My Account para ver su uso de energía en incrementos de 15 minutos y recibir consejos de ahorro personalizados. Para registrarse o ver su cuenta visite xcelenergy.com/MyAccount.
- Cargue su vehículo eléctrico durante la noche para evitar las tarifas altas durante el día.
- Apague las luces, equipos, computadoras y otros dispositivos electrónicos pequeños cuando no estén en uso.
- Utiliza tiras de poder inteligente para ayudar a apagar todos los aparatos con un solo botón.

Mire este video explicando cómo funciona la tarifa de Time of Use en Español. Para aprender más sobre Xcel Energy's Time of Use Rate visite xcelenergy.com/TOU.

Community Logo
Placeholder



PARTNERS IN ENERGY
An Xcel Energy Community Collaboration

